



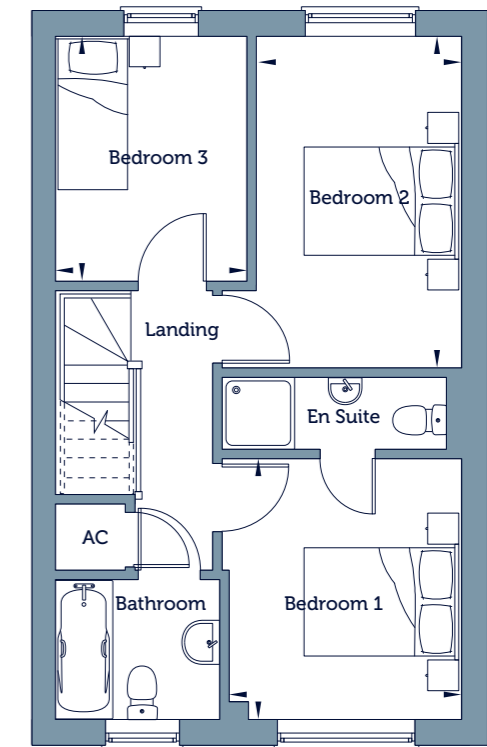
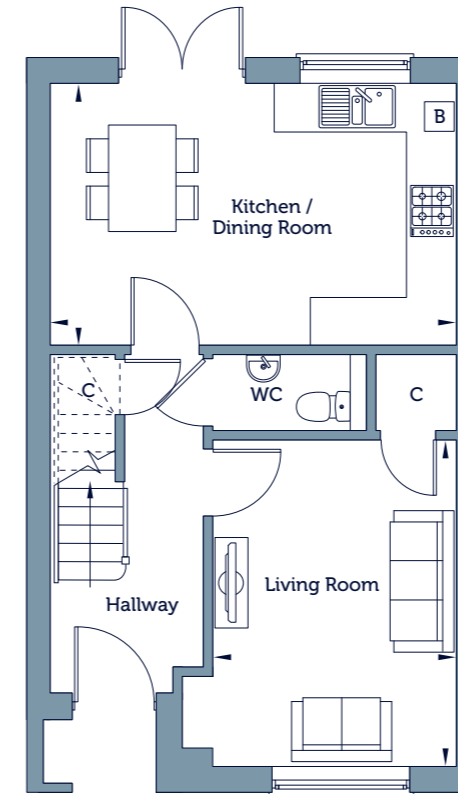
The Drift

Three Bedroom House

Market Sale 9, 10, 23, 25, 27, 37, 62, 71 and 83



Computer Generated Image. Elevations may vary from plot to plot.



Ground Floor

Living Room 13'2" x 9'10"	4.03m x 3.01m
Kitchen / Dining Room 10'7" x 16'6"	3.24m x 5.04m

First Floor

Bedroom 1 10'6" x 9'5"	3.22m x 2.89m
Bedroom 2 13'5" x 8'4"	4.10m x 2.54m
Bedroom 3 9'10" x 7'9"	3.02m x 2.38m

Gross Internal Area 915 sq ft	85 sq m
---	---------

Handed Plots 9, 37, 62 and 83

*Window locations may vary, refer to plot specific plans at time of reservation.

Key

B Boiler AC Airing Cupboard C Cupboard W Fitted Wardrobe

Floorplans are not drawn to scale. Measurements are taken from areas marked ►. They are maximum approximate dimensions and given as a guide only. These should not be used as a basis for purchasing flooring or furniture. We reserve the right to alter plans, specification, position of doors and windows and change tenure subject to demand without prior notice. External elevations vary from plot to plot. Please ask your Sales Consultant for current information when reserving your new home. Computer generated image overleaf. Information correct at time of going to print.

The Drift

The Drift is a lovely three bedroom home. On the ground floor, the hallway leads through to a good sized kitchen/dining room with double doors opening out into the garden. The hallway also leads through to a living room and a convenient downstairs WC. Upstairs you will find a main bedroom to the front with en-suite shower room and built-in wardrobe, a family bathroom and two further bedrooms.

